

# Workshop containers



We manufacture all our workspace cabins in accordance with the highest industry standards (DNV 2.7-1 or ISO 10855, DNV 2.7-2, DNV 2.7-3, ATEX, IECEx and NORSOK) including compliance with SOLAS/IMO regulatory requirements for fire protection.

Other uses include: rigging lofts, welding workshops, electrical shops, tool stores, testing workshops, ROV stores containers, instrument stores/testing, valve stores, support for offshore decommissioning operations, including well plug and abandonment.



## Can't find what you are looking for?

Contact our global sales team at [sales@oegoffshore.com](mailto:sales@oegoffshore.com) or visit our website to find your regional representative at [oeg.group](http://oeg.group)

## Optional features

Lights & sockets, heaters, benches & shelving

Side personnel door, hook up power cable

External flood lighting, a/c, jib hoists

Escape hatch, window, ISO locks for stacking

Wall & floor cabinets, roof and wall bars

Wall spikes, tool boxes/drawers, standard vice / baker vice

Pneumatic air line, modular components

Eye wash station, first aid kits, customer logos

Custom paint colour & custom modifications

Please check exact specifications with your local representative when ordering.

Metric | International standard

Type	External dimensions (LxWxH - mm)	Internal dimensions (LxWxH - mm)	Tare weight (kgs)	Payload (kgs)	Max gross weight (kgs)
Mini workshop containers	1,666 x 1,912 x 2,796	1,470 x 1,748 x 2,478	1,800	3,770	5,570
10ft Workshop container	2,991 x 2,438 x 2,591	2,797 x 2,240 x 2,208	2,365	7,750	10,115
15ft Workshop container	4,524 x 2,438 x 2,591	4,330 x 2,214 x 2,230	2,940	9,710	12,650
20ft Workshop container	6,058 x 2,438 x 2,591	5,803 x 2,240 x 2,230	3,750	15,000	18,750
10ft Rigging loft	2,991 x 2,438 x 2,587	2790 x 2260 x 2105	3,150	7,150	10,300
20ft Rigging loft	6,058 x 2,438 x 2,591	5858 x 2238 x 2391	5,000	10,000	15,000

# Workshop containers

Imperial | International/US standard

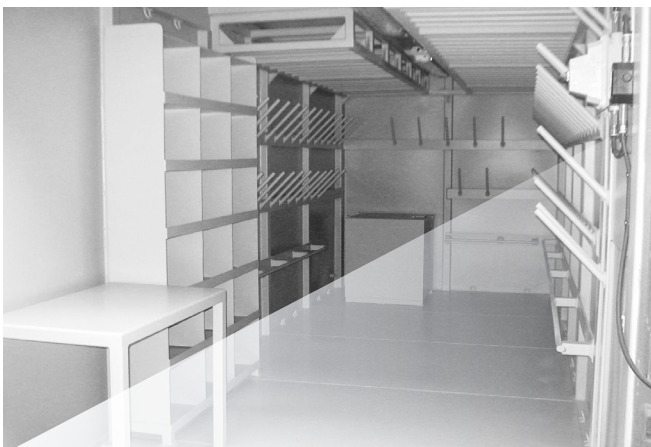
Type	External dimensions (LxWxH - ft/in)	Internal dimensions (LxWxH - ft/in)	Tare weight (lbs)	Payload (lbs)	Max gross weight (lbs)
Mini workshop containers	5' 5.5" x 6' 3.3" x 9' 2"	4' 9.9" x 5' 8.8" x 8' 1.5"	3,968	8,311	12,279
10ft Workshop container	9' 9.8" x 8' 0" x 8' 6"	9' 2" x 7' 4.2" x 7' 2.9"	5,213	17,085	22,299
15ft Workshop container	14' 10.1" x 8' 0" x 8' 6"	14' 2.5" x 7' 3.2" x 7' 3.8"	6,481	21,406	27,888
20ft Workshop container	19' 10.5" x 8' 0" x 8' 6"	19' 0.5" x 7' 4.2" x 7' 3.8"	8,267	33,069	41,336
10ft Rigging loft	9' 9.8" x 8' 0" x 8' 5.9"	9' 1.8" x 7' 5" x 6' 10.9"	6,944	15,763	22,707
20ft Rigging loft	19' 10.5" x 8' 0" x 8' 6"	19' 2.5" x 7' 4" x 7' 10.1"	11,023	22,046	33,069



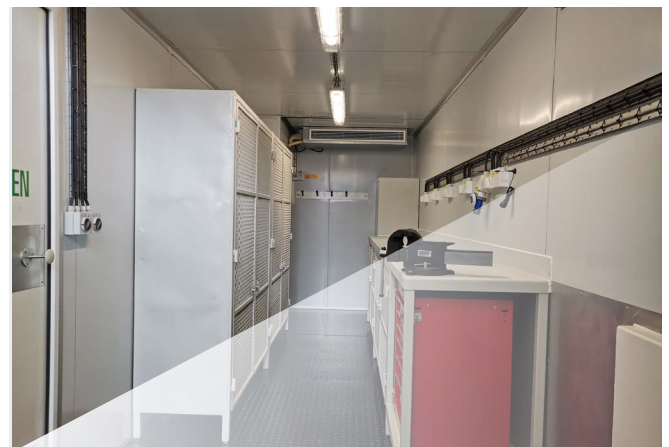
10ft Workshop container - open



20ft Workshop container - open



20ft Rigging loft - internal



20ft Workshop container - internal

## Can't find what you are looking for?

Contact our global sales team at [sales@oegoffshore.com](mailto:sales@oegoffshore.com) or visit our website to find your regional representative at [oeg.group](http://oeg.group)

E & OE - All dimensions and weights are accurate at the time of creation. Please check exact specifications of units with your local representative when ordering.

